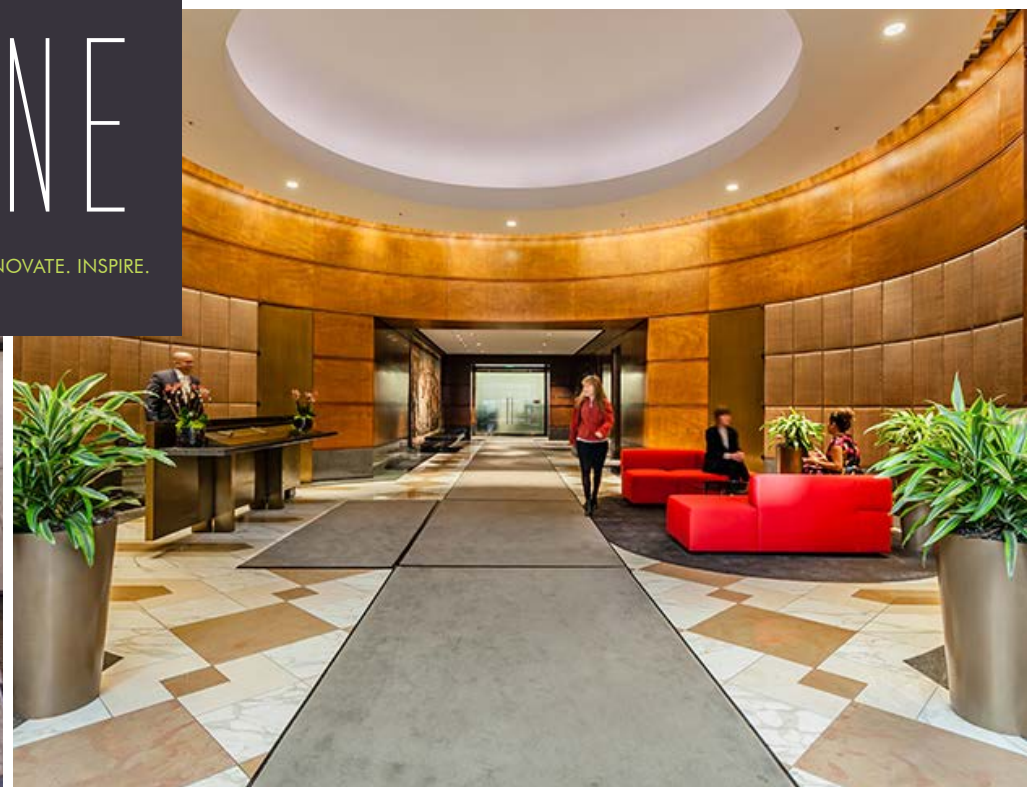


235 PINE

CONNECT. INNOVATE. INSPIRE.



235 PINE



PROPERTY FEATURES

- LEED Gold certified building
- Architecturally distinctive Skidmore, Owings & Merrill design
- 8,500 sq. ft. floor plates offering full-floor identity to small- and medium-size users
- Column-free, side-core design
- Excellent access to public transit
- Local ownership
- First-rate amenities on site, including a well-appointed conference center, 4-level parking garage, bike racks, showers and day lockers

SUITE	RSF (Approx.)	DATE AVAILABLE	COMMENTS
100	2,580	Now	Recently improved plug & play suite with double-door identity off the main lobby, 2 conference rooms, phone room, 16 workstations, 2 collaboration/lounge areas and open kitchen. View Virtual Tour
600	8,860	Now	Full-floor identity, 16 offices/meeting rooms, large conference room, boardroom, kitchen, copy room and IT room. View Virtual Tour
750	2,816	Now	Plug & play suite with 2 conference rooms, open kitchen, storage/IT room and open area with 10 workstations View Virtual Tour
1050	2,619	Now	2 offices/meeting rooms, kitchenette/copy room, IT closet and open area. View Virtual Tour
1250	1,863	Now	Recently improved corner suite with 3 offices/meeting rooms, conference room, kitchenette and open area. View Virtual Tour
1300	8,553	Now	Full-floor creative suite with partially exposed ceiling and polished concrete floors, 4 offices, 3 conference rooms, 3 phone rooms, kitchen and open area. Furniture potentially available. View Virtual Tour
1475	2,390	Now	Recently improved suite with 1 office/meeting room, conference room, kitchenette and open area. View Virtual Tour
2300	8,257	Now	Full-floor identity. Recently improved plug & play suite with 18 offices/meeting rooms, large conference room, 2 phone rooms, open kitchen, IT room and storage rooms.



www.235pine.com



CBRE

Sam Stein | T +1 415 772 0209 | C +1 415 706 9111 | sam.stein@cbre.com | Lic. 02026162

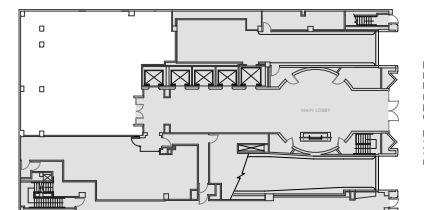
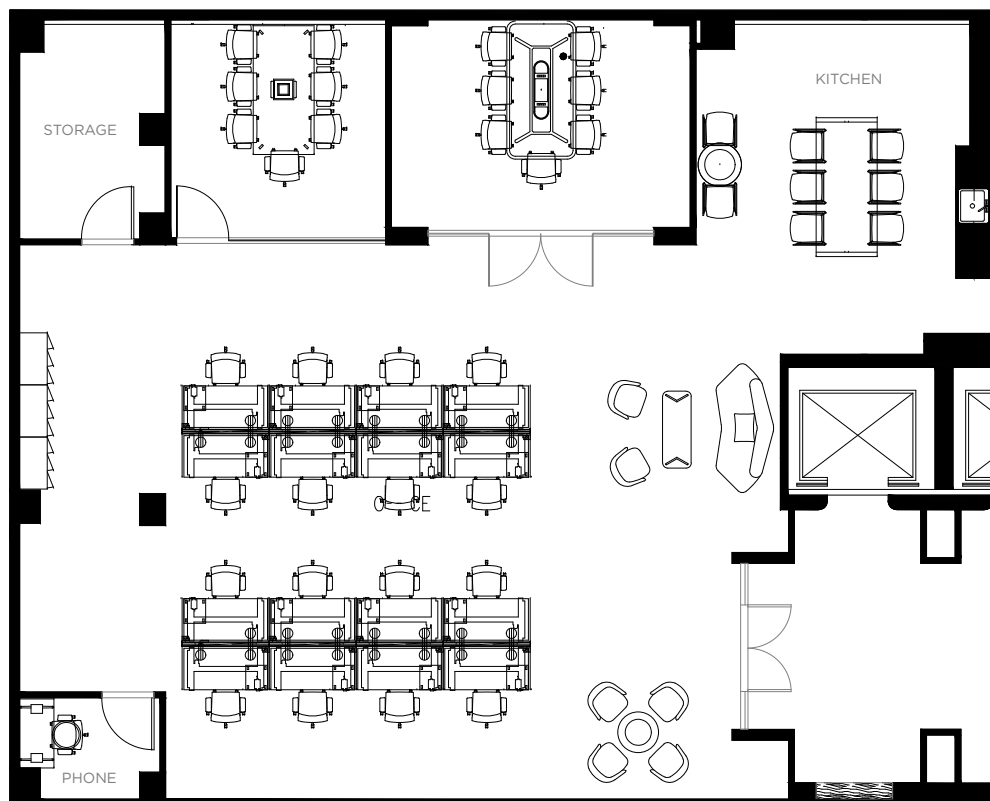
CBRE | 415 Mission Street, 46th Floor, San Francisco CA 94105 | www.cbre.com/sfdt

235
PINE

SUITE 100
±2,580 RSF

FEATURES:

- Recently improved **plug & play** suite with double-door identity off the main lobby
- 2 conference rooms, phone room, 16 workstations, 2 collaboration/lounge areas, open kitchen, storage
- Available now



[VIEW VIRTUAL TOUR](#)

Sam Stein | T +1 415 772 0209 | C +1 415 706 9111 | sam.stein@cbre.com | Lic. 02026162

CBRE | 415 Mission Street, 46th Floor, San Francisco CA 94105 | www.cbre.com/sfdt



www.235pine.com

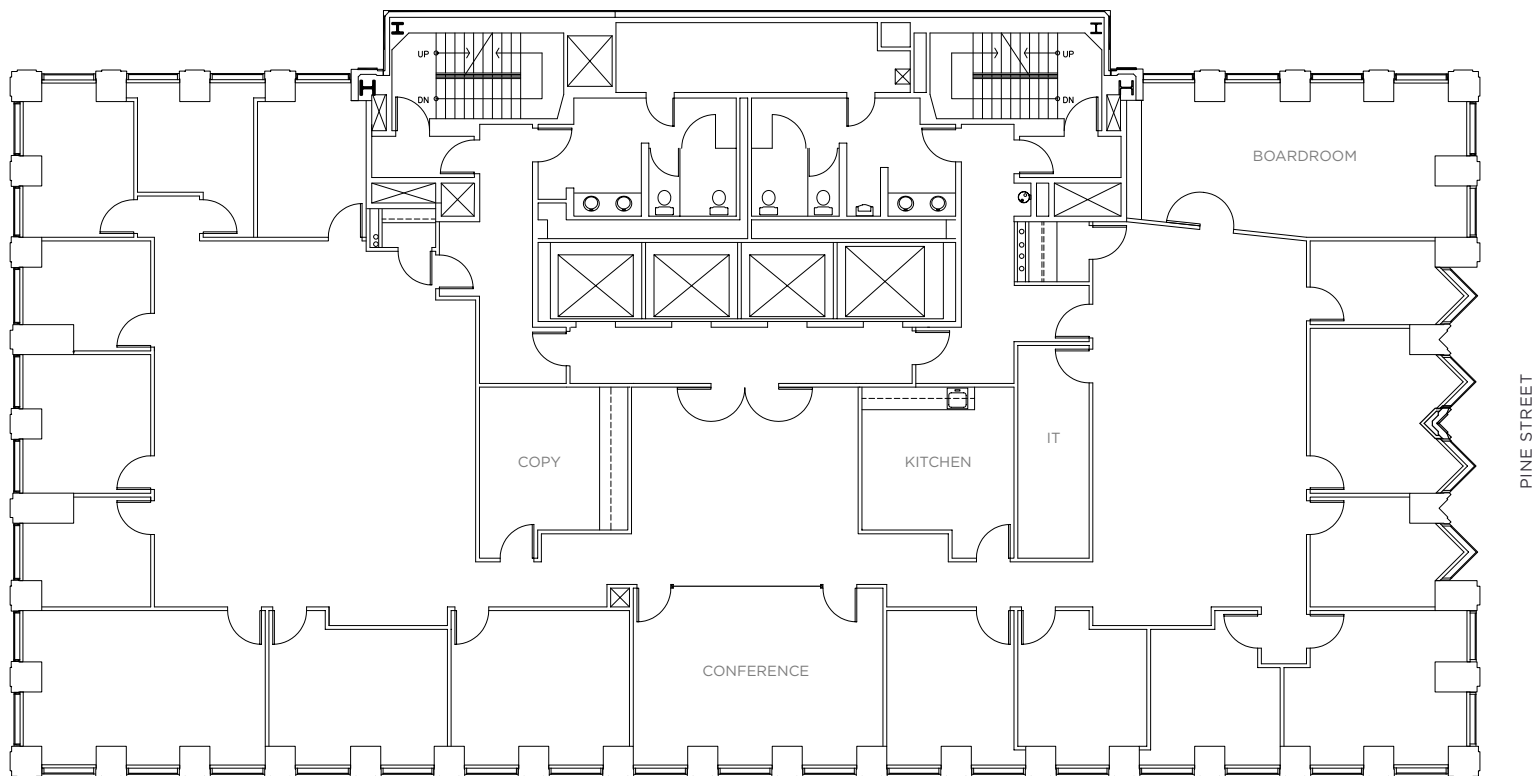
CBRE

235
PINE

SUITE 600
±8,860 RSF

FEATURES:

- Full-floor identity
- 16 perimeter offices/meeting rooms, large conference room, boardroom, kitchen, storage/copy room, IT room
- Available now



VIEW VIRTUAL TOUR

Sam Stein | T +1 415 772 0209 | C +1 415 706 9111 | sam.stein@cbre.com | Lic. 02026162

CBRE | 415 Mission Street, 46th Floor, San Francisco CA 94105 | www.cbre.com/sfdt



www.235pine.com

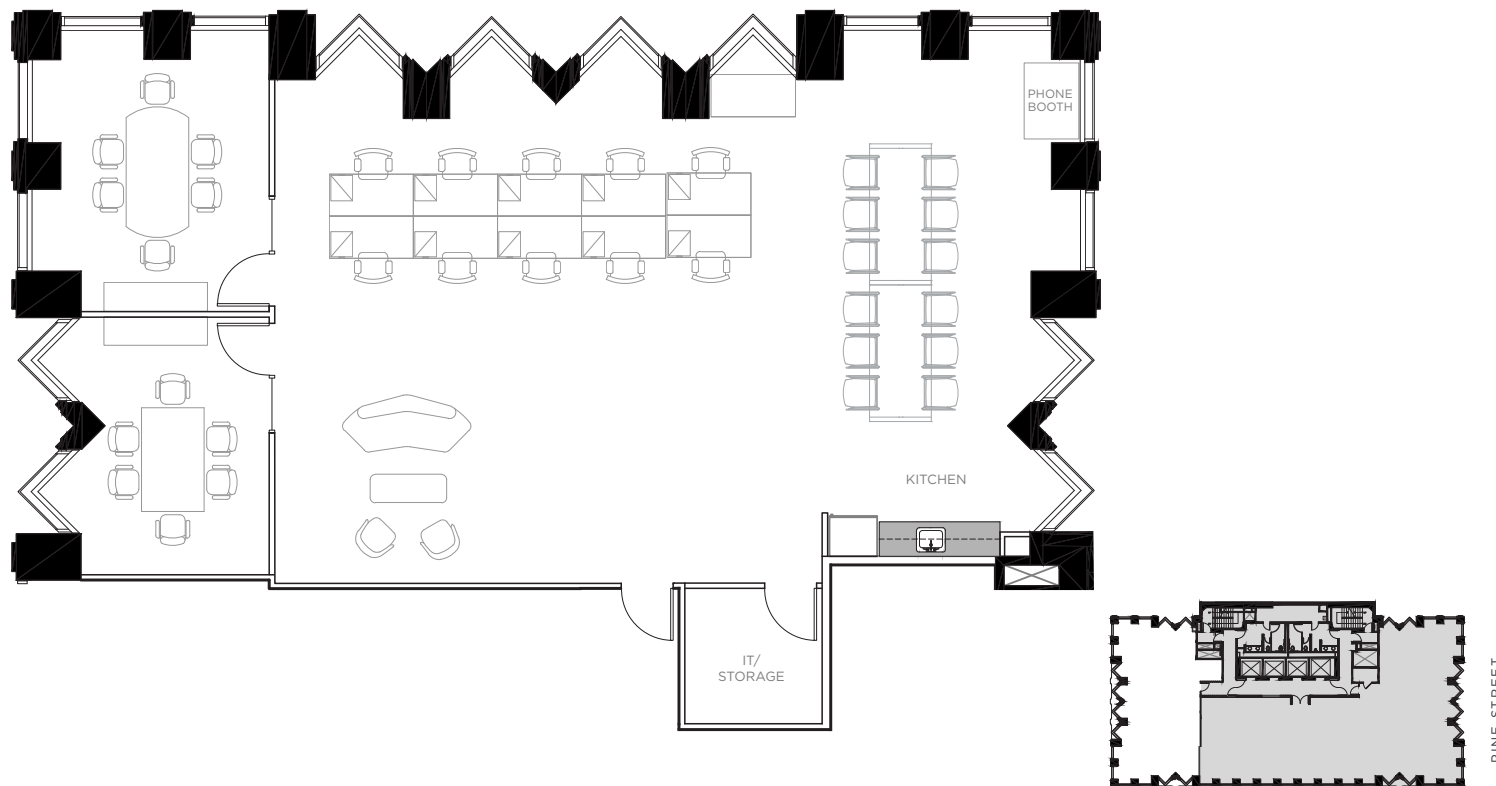
CBRE

235
PINE

SUITE 750
±2,816 RSF

FEATURES:

- Recently improved **plug & play** suite
- 2 conference rooms, open kitchen, storage/IT room, open area with 10 workstations, collaboration/lounge area
- Available now



VIEW VIRTUAL TOUR

Sam Stein | T +1 415 772 0209 | C +1 415 706 9111 | sam.stein@cbre.com | Lic. 02026162

CBRE | 415 Mission Street, 46th Floor, San Francisco CA 94105 | www.cbre.com/sfcd



www.235pine.com

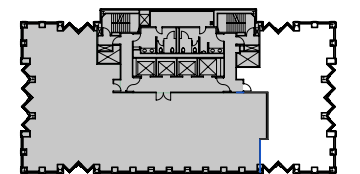
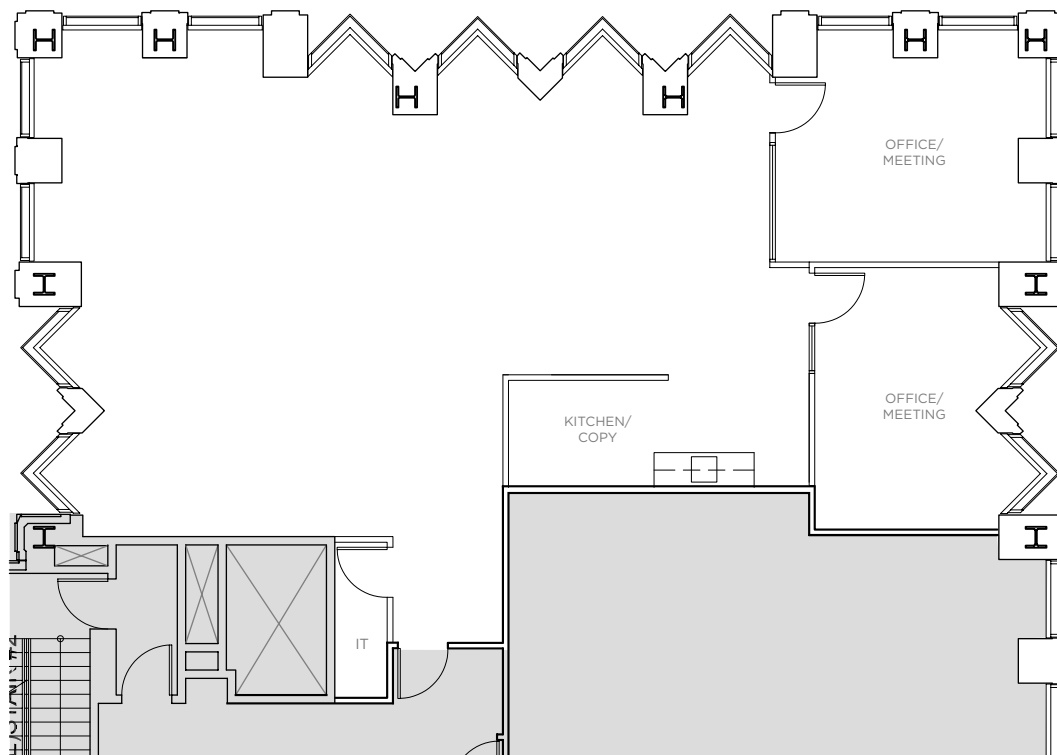
CBRE

235
PINE

SUITE 1050
±2,619 RSF

FEATURES:

- 2 perimeter offices/meeting rooms, kitchenette/copy room, IT closet, open area for workstations
- Ample natural light
- Available now



VIEW VIRTUAL TOUR

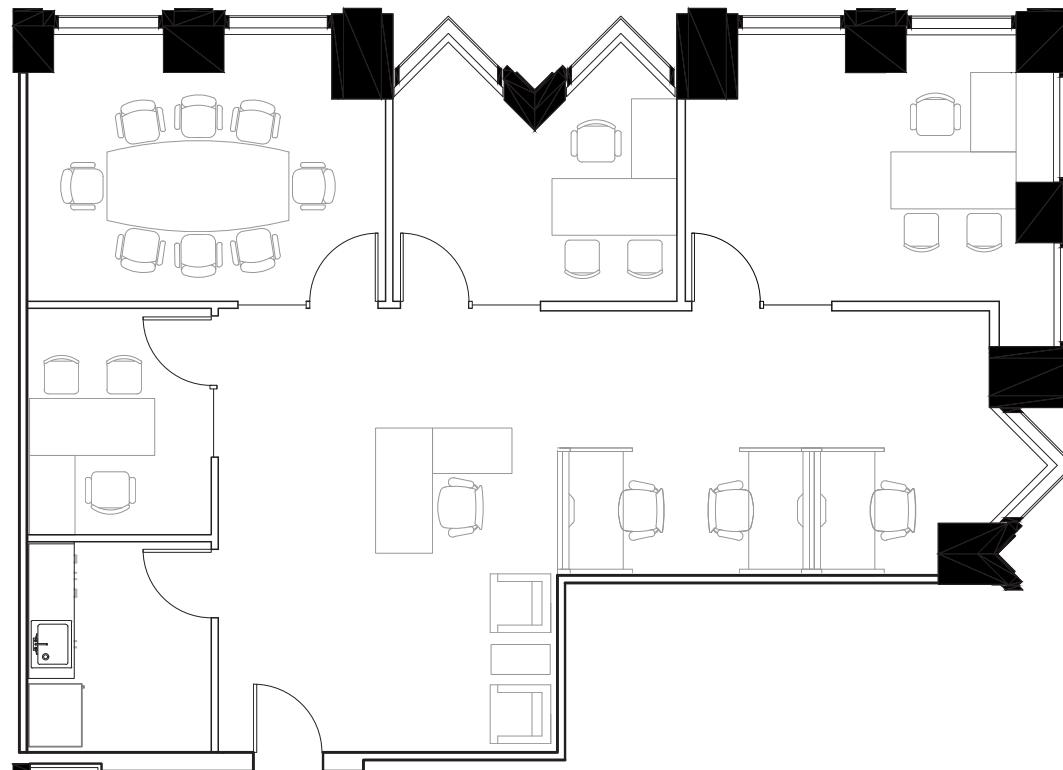


235
PINE

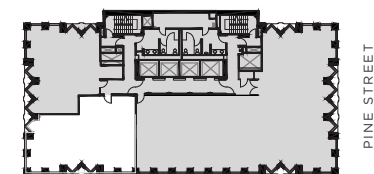
SUITE 1250
±1,863 RSF

FEATURES:

- Recently improved corner suite with great natural light
- 3 private offices/meeting rooms, conference room, kitchenette, open area for workstations
- Available now



FURNITURE NOT INCLUDED



VIEW VIRTUAL TOUR

Sam Stein | T +1 415 772 0209 | C +1 415 706 9111 | sam.stein@cbre.com | Lic. 02026162

CBRE | 415 Mission Street, 46th Floor, San Francisco CA 94105 | www.cbre.com/sfcd



www.235pine.com

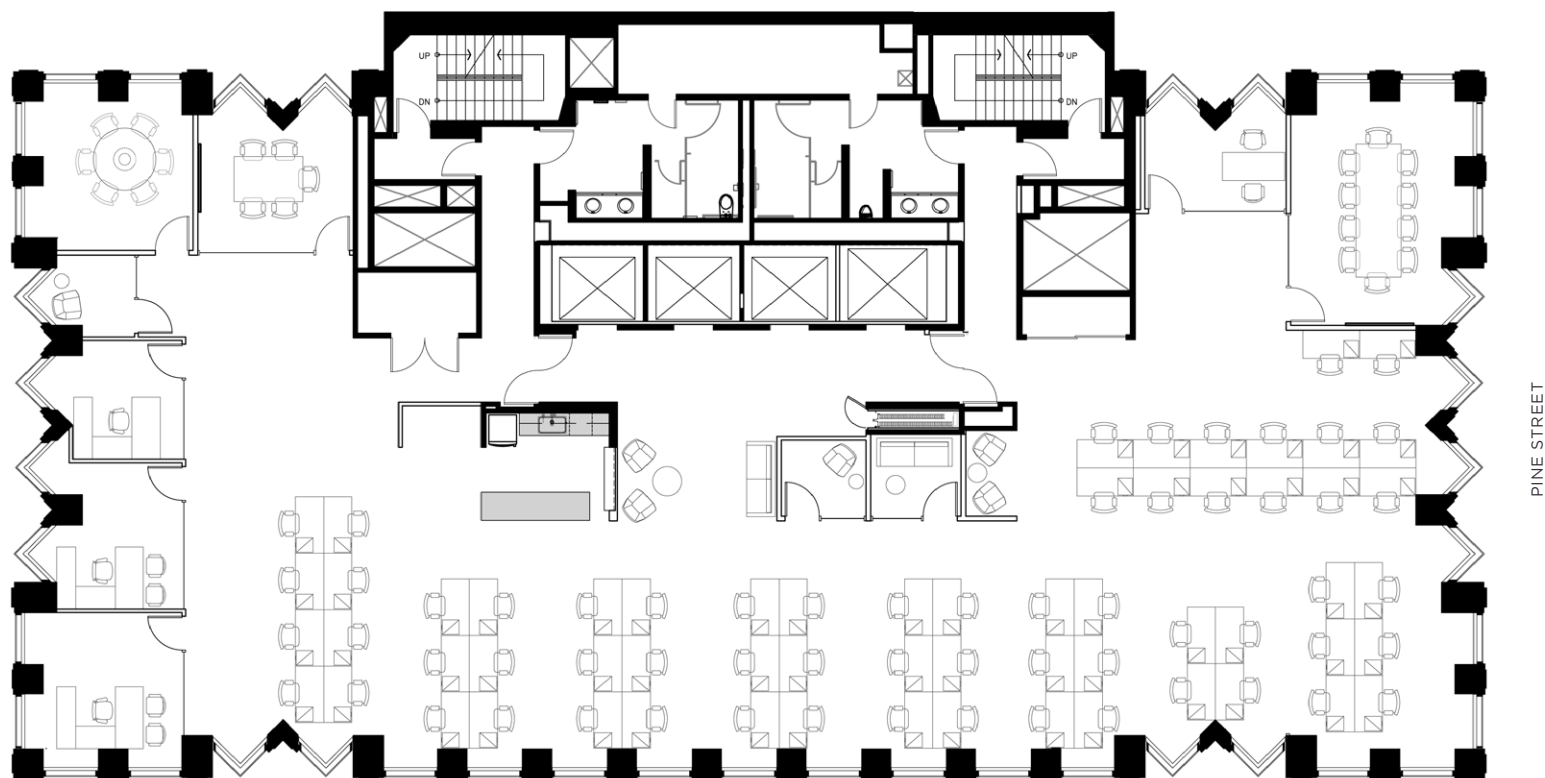
CBRE

235
PINE

SUITE 1300
±8,553 RSF

FEATURES:

- Recently improved creative full floor with partially exposed ceiling and polished concrete floors
- 4 offices/meeting rooms, 3 conference rooms, 3 phone rooms, open kitchen, open area with 32 workstations
- Furniture potentially available



VIEW VIRTUAL TOUR

Sam Stein | T +1 415 772 0209 | C +1 415 706 9111 | sam.stein@cbre.com | Lic. 02026162

CBRE | 415 Mission Street, 46th Floor, San Francisco CA 94105 | www.cbre.com/sfcd



www.235pine.com

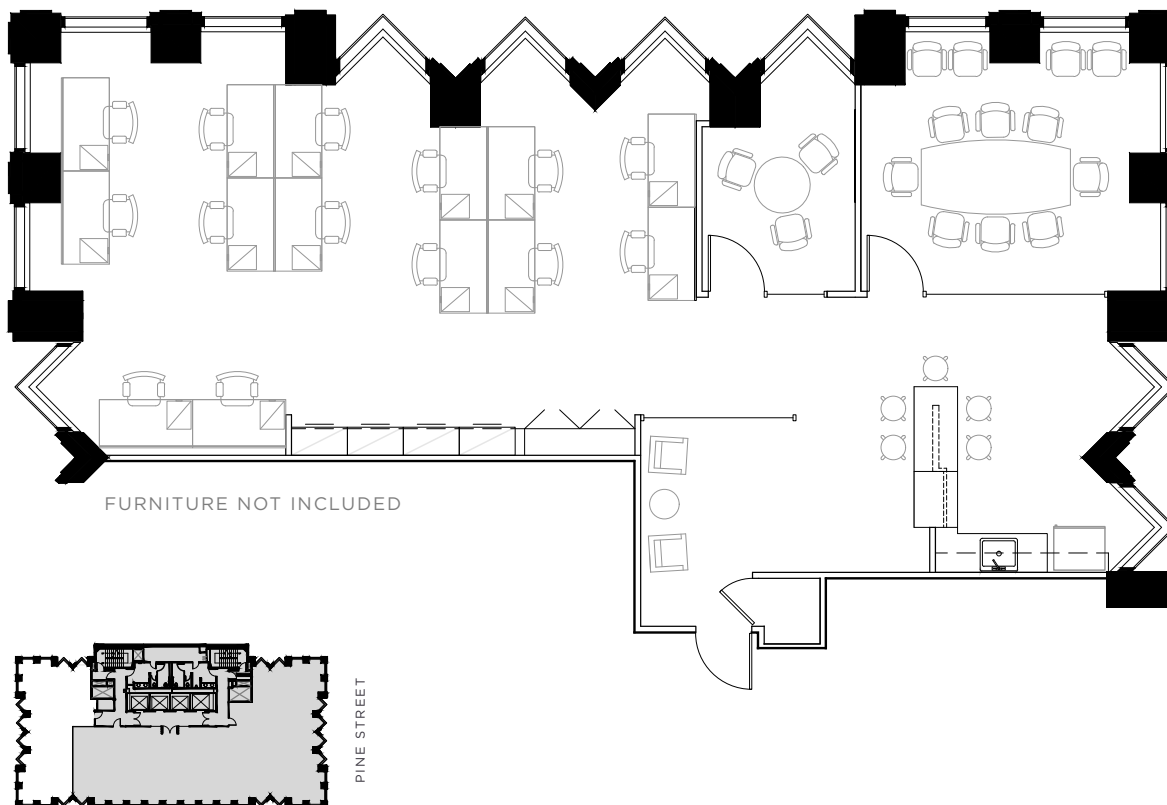
CBRE

235
PINE

SUITE 1475
±2,390 RSF

FEATURES:

- Recently improved suite with 1 office/meeting room, conference room, kitchenette, open area for workstations
- Ample natural light
- Available now



[VIEW VIRTUAL TOUR](#)

Sam Stein | T +1 415 772 0209 | C +1 415 706 9111 | sam.stein@cbre.com | Lic. 02026162

CBRE | 415 Mission Street, 46th Floor, San Francisco CA 94105 | www.cbre.com/sfdt



www.235pine.com

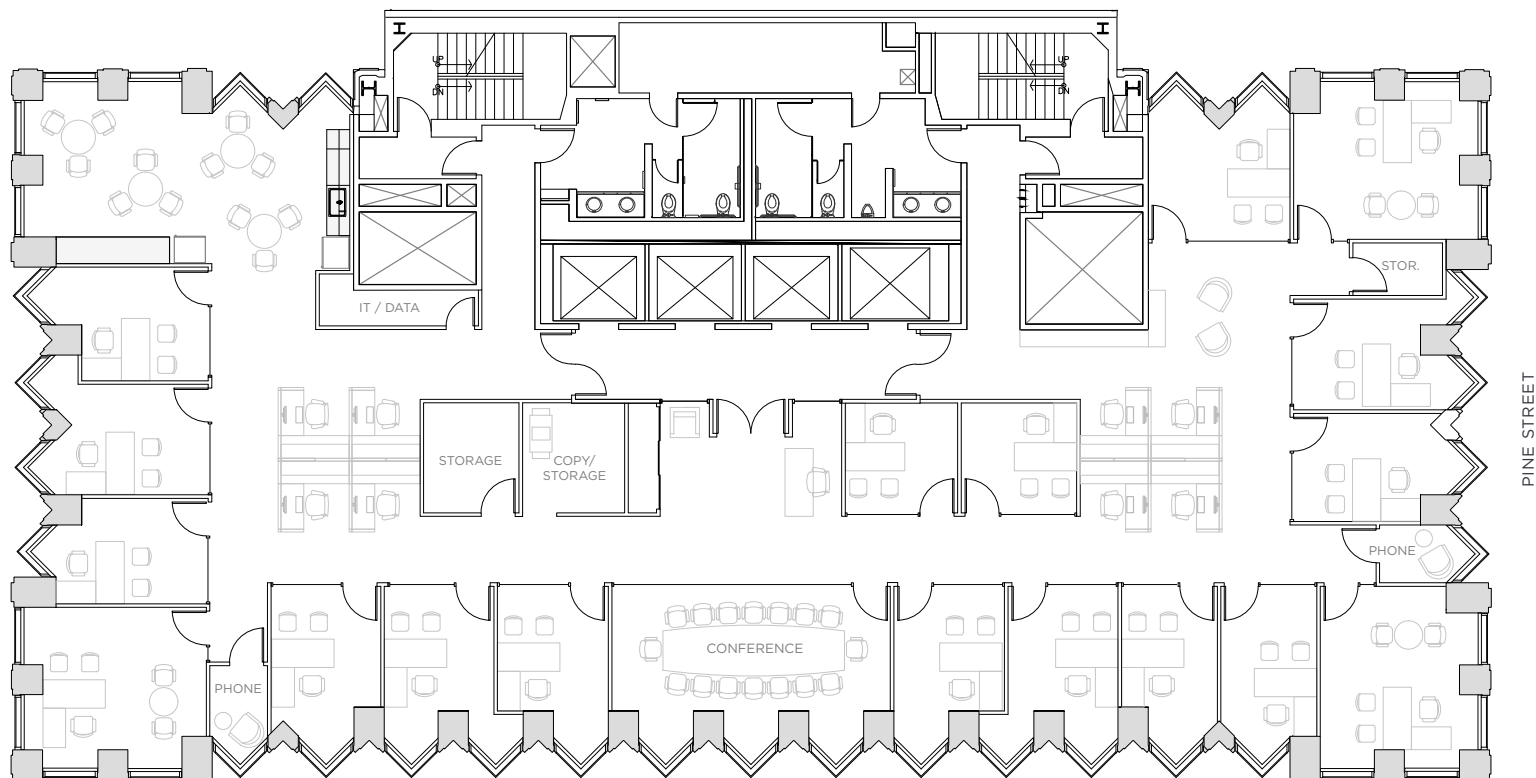
CBRE

235
PINE

SUITE 2300
±8,257 RSF

FEATURES:

- Recently improved **plug & play** full floor
- 16 offices/meeting rooms, large conference room, 2 phone rooms, open kitchen, storage, IT room
- Available now



Sam Stein | T +1 415 772 0209 | C +1 415 706 9111 | sam.stein@cbre.com | Lic. 02026162

CBRE | 415 Mission Street, 46th Floor, San Francisco CA 94105 | www.cbre.com/sfdt



www.235pine.com

CBRE

235
PINE



TRANSPORTATION MAP



4*
MIN.
Montgomery
BART/MUNI



6*
MIN.
Salesforce
Transit Center



12*
MIN.
Ferry
Building



DRIVE TIME TO MAJOR
TRANSPORTATION OUTLETS

- BAY BRIDGE - 3 MINUTES
- VAN NESS AVE - 4 MINUTES
- GOLDEN GATE BRIDGE - 20 MINUTES

* Measured in walking time



www.235pine.com



235 PINE

AMENITIES MAP



NEARBY RESTAURANTS / EATERIES

- | | |
|------------------------------|-------------------------------|
| 1 Dar Fatma | 24 The Ramen Bar |
| 2 Tokyo Express | 25 PABU |
| 3 Lee's Deli | 26 Cafe Madeleine |
| 4 Subway | 27 Michael Mina |
| 5 Good Eats Café | 28 Tadich Grill |
| 6 Chez BeeSen | 29 Perbacco |
| 7 The Bear & Monarch | 30 Barbacco |
| 8 Espressamente illy | 31 Schroeder's |
| 9 Mendocino Farms | 32 Harrington's Bar and Grill |
| 10 Locali Mediterranean | 33 Royal Exchange |
| 11 Jimmy John's | 34 Blue Bottle Coffee |
| 12 Lou's Cafe | 35 The Treasury |
| 13 Starbucks | 36 Workshop Café |
| 14 Chez Julien | 37 Credo |
| 15 Sushi Umi | 38 Wayfare Tavern |
| 16 Mixt Greens | 39 Bob's Steak & Chop House |
| 17 Coast Poke Counter | 40 Sam's Grill |
| 18 Peet's Coffee & Tea | 41 Café Bastille |
| 19 Specialty's Café & Bakery | 42 Café Tiramisu |
| 20 Philz Coffee | 43 Plouf |
| 21 Cenote | 44 B44 |
| 22 Nosh Cafe | 45 Toy Soldier |
| 23 The Plant Café Organic | 46 Sauce |

FITNESS CENTERS

- | | |
|---------------------|-------------------|
| 1 Equinox | 3 Planet Fitness |
| 2 Flagship CrossFit | 4 24 Hour Fitness |

© 2023 CBRE, Inc. The information above has been obtained from sources believed reliable. While we do not doubt its accuracy, we have not verified it and make no guarantee, warranty or representation about it. It is your responsibility to independently confirm its accuracy and completeness. The 'LEED® Certification Mark' is a registered trademark owned by the U.S. Green Building Council® and is used with permission. CBRE and the CBRE logo are service marks of CBRE, Inc. and/or its affiliated or related companies in the United States and other countries. All other marks displayed on this document are the Property of their respective owners.

Sam Stein | T +1 415 772 0209 | C +1 415 706 9111 | sam.stein@cbre.com | Lic. 02026162

CBRE | 415 Mission Street, 46th Floor, San Francisco CA 94105 | www.cbre.com/sfdt



www.235pine.com

CBRE