

235  
PINE

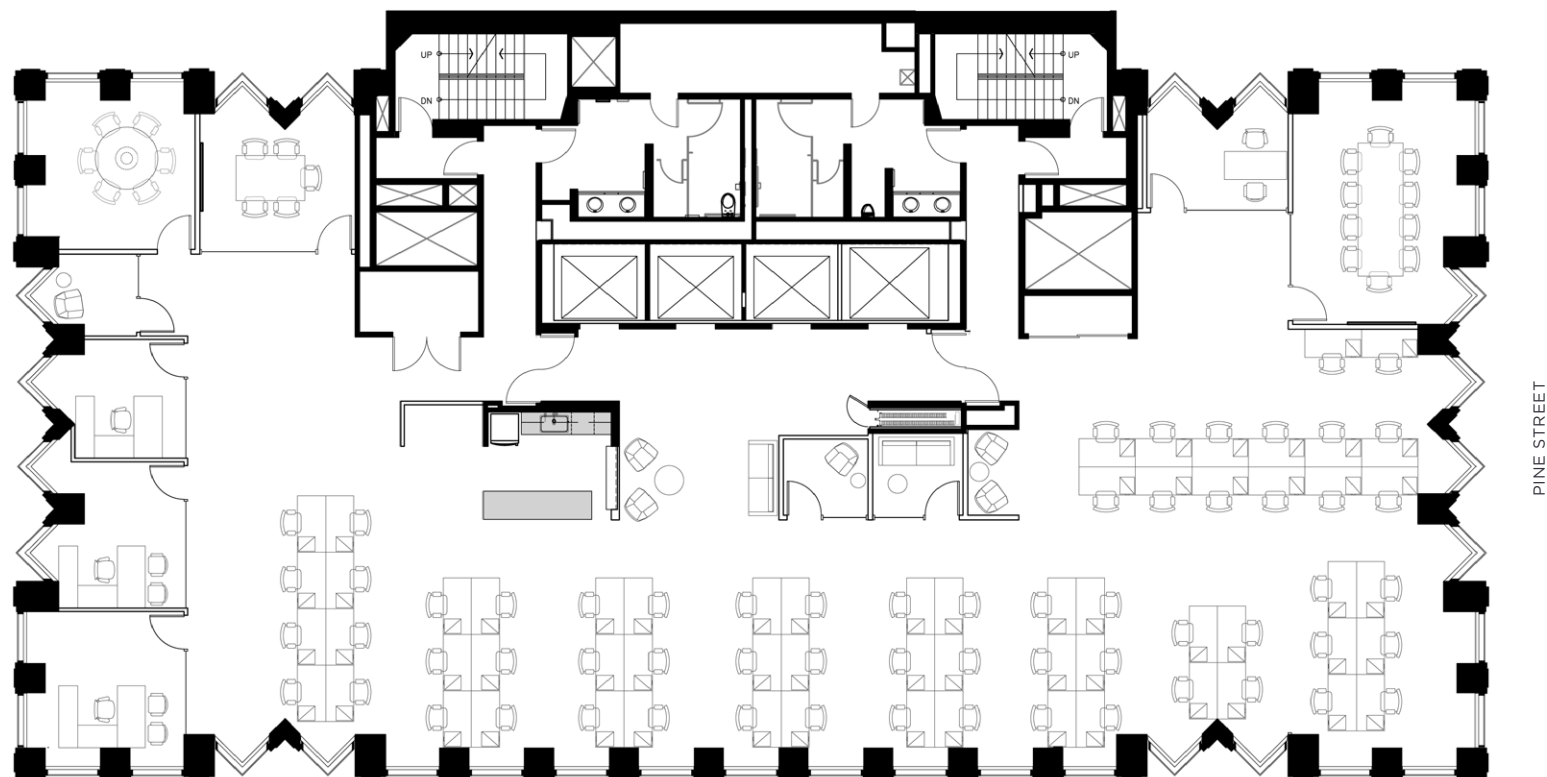


VIEW VIRTUAL TOUR

**SUITE 1300**  
**±8,553 RSF**

**FEATURES:**

- Recently improved creative full floor with partially exposed ceiling and polished concrete floors
- 4 offices/meeting rooms, 3 conference rooms, 3 phone rooms, open kitchen, open area with 32 workstations
- Furniture potentially available



Sam Stein | T +1 415 772 0209 | C +1 415 706 9111 | sam.stein@cbre.com | Lic. 02026162

CBRE | 415 Mission Street, 46th Floor, San Francisco CA 94105 | www.cbre.com/sfdt



[www.235pine.com](http://www.235pine.com)

**CBRE**